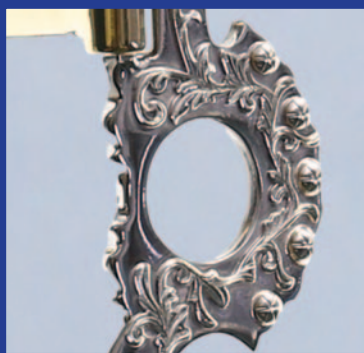


INTRODUCING THE NEUE SCHULE WESTERN RANGE



RIDE WITH PRECISION
PERFORM WITHOUT LIMITS

Neue
NS **chule**

At Neue Schule we are passionate horse owners. We understand what it is to get up at 5am in the morning, in the pitch black on a cold and dreary winter's day to muck out, exercise and turn out our beloved horses!

Our horses are fed and watered before we are. Horse ownership is a major commitment, demanding much of our time. However, as riders ourselves we know that the rewards are immeasurable. From serious competitors to pleasure riders and even those with retirees, Neue Schule understands you. We are all dedicated to our four-hoofed friends, come rain or shine.

Neue Schule has a core belief in “That which is good for the horse is all that matters, the rest will follow” (*after P.R. van Weeren*). We truly believe that the horse comes first and as a Company we uphold this. You may rest assured that your Neue Schule bit has been designed to promote the harmonious partnership between the horse and rider.



ABOUT NEUE SCHULE

Neue Schule is dedicated to engineering the world's best bits. We stand apart from others in that our products are developed combining scientific research and practical rider experience, creating bits that are focused on improving horse performance, comfort and welfare. We aim to enhance the communication and partnership between the horse and rider.

Each bit has been anatomically designed from the inside out. Our vast collection caters for not only the variance in mouth conformation, but also ensures that we connect with the desired areas in order to ensure comfort, sustainability and achieve the preferred way of going. Your objective may be to eradicate a long-term tongue evasion due to discomfort, or to promote a specific response through the rein aid. Whatever you need, Neue Schule will have a bit for you. With all our extensive research to hand we can advise on issues accordingly to achieve an optimal partnership between horse and rider.

Outreach and Education

Whether we are out and about delivering advice or informative talks, Neue Schule has been entrusted by you to give the true picture. Our NS Academy team conduct research that is published in the scientific literature and which leads our product design approach. Team members are regularly invited to universities and colleges to educate the equine leaders of tomorrow.

Ask yourself - "Do I really know how my bit works?" Neue Schule and its educational offshoot, The Academy, can tell you.



The Merits of Salox® Gold

Metals are the first choice for modern horse bits but what properties would the perfect metal possess? The Neue Schule answer to this question is based on a simple philosophy – that which is good for the horse is all that matters* – the rest will follow. *P.R. van Weeren

The mouth is warm and soft and needs to remain as calm and still as possible to listen for the rider's aids. So the metal should also be warm and soft and of neutral taste. This last feature is the big surprise. Why should we encourage the horse to explore the bit for taste when what we want is a calm and quiet mouth? Once again Neue Schule re-thinking leads the way.

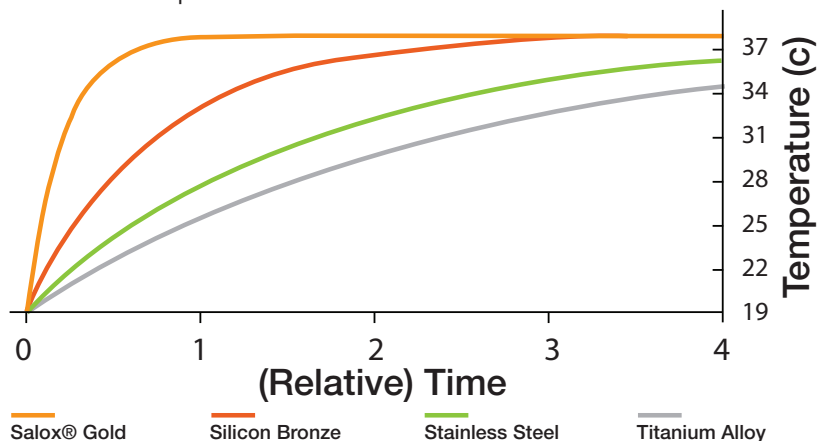
Salox® is formulated for high thermal diffusivity because we want the bit to reach mouth temperature so

rapidly that it cannot feel cold for too long. The graph shows the equilibrium uniform temperature versus time of horse bit materials of identical volume and surface dimensions when first placed in contact with a horse's mouth at 37 °C. Salox® reaches mouth temperature first.

** Studies on Salox and SCA conducted at the UK National Physical Laboratory, London*

Horses may occasionally bite onto the bit and when this happens we need to ensure that the impact force is safely and comfortably absorbed into the material of the bit rather than reflected back onto the teeth. Try biting into a stainless steel table spoon to see what we mean! Salox® is just soft enough to dampen out acoustic waves that would otherwise ring into the horse's jaw.

**Hardness data collected by Element Materials Technology Ltd.*



SALOX® SOUND SCIENCE GOOD SENSE

Finally... taste. We don't aim to feed our horse using its bit. Neither do we want the horse to explore the bit's taste. In fact it is here that we applaud stainless steel for trapping in the soluble metal ions that create taste.

Borrowing on the same principles, our addition of aluminium which forms a protective insoluble alumina (oxide) coating solves all these issues automatically. It is also self-healing - if the horse bites into the bit the insoluble surface oxide quickly re-forms to re-trap the ions.

** Comparison extraction tests for soluble ions performed at Durham University, UK using ICP analysis.*

Straight from the Horse's Mouth

What all this adds up to is that we have combined as much warmth,

softness and biological inertness as we can into Salox® because the horse has given us the privilege of using his warm, soft and sensitive mouth to communicate with us.

The all too familiar tension that a cold and hard mouthpiece could create is not only counteracted but a pacifying and quietening of the mouth is obtained when using unobtrusive Salox®.

Want more?

We don't want loose talk when it comes to the science. See our web site for more complete explanations and better still talk to us through Facebook, X or Instagram - *don't be shy, we love to show you how it all works!*



When it comes to choosing a bit, the Neue Schule team provides accessible, friendly & professional advice. This ensures that you have the ideal bit for you and your horse. Each horse's mouth conformation and way of going is unique and we acknowledge and cater for the variety of equine needs. Neue Schule have designed and produced a large range of bits to meet these complex requirements.

This product guide gives an overview of each bit in our range plus useful product information, to help you decide which bit to choose. Our YouTube channel offers a wide spectrum of videos describing our bits, their actions and how their influence is different from other bits. Alternatively, horse owners can call the Neue Schule team for additional information about our bits, particularly if unsure about which bit to purchase.

For more detailed advice we offer an in-depth online questionnaire that can be found on our website, you will receive a personalised response by email recommending which bit (or range of bits) will be beneficial to you and provide an explanation for our reasoning.

Neue Schule has a fantastic range of stockists from expert Bit Hire specialists to NS Academy trained Bit & Bridle Fitters to our approved and respected retailers.

Internationally, retailers are supported in their territory by distributors. Stockists and their location can be found on our website using the store locator. Hiring a bit before purchasing is an approach that we initiated in the UK nearly 20 years ago and we would advise contacting our stockists for this service.



THE IMPORTANCE OF BIT SELECTION



- Stainless Steel Fresno Shank with German Silver Floral Trim
- Salox® Spade Mouthpiece

Sizing Options

12 mm Mouthpiece
7 1/2" Shank

4 3/4"
120mm

5"
127mm

5 1/4"
133mm



PORTED FRESNO SHANK



- Stainless Steel Fresno Shank with German Silver Floral Trim
- Salox® Spade Mouthpiece with incorporated Roller

Sizing Options

12 mm Mouthpiece
7 1/2" Shank

4 3/4"
120mm

5"
127mm

5 1/4"
133mm



PORTED FRESNO SHANK WITH ROLLER



- Stainless Steel Fresno Shank with German Silver Floral Trim
- Engraved Salox® Spade Mouthpiece

Sizing Options

12 mm Mouthpiece
7 1/2" Shank

4 3/4"
120mm

5"
127mm

5 1/4"
133mm



ENGRAVED PORTED FRESNO SHANK



- Stainless Steel Fresno Shank with German Silver Floral Trim
- Engraved Salox® Spade Mouthpiece with incorporated Roller

Sizing Options

12 mm Mouthpiece
7 1/2" Shank

4 3/4"
120mm

5"
127mm

5 1/4"
133mm



ENGRAVED PORTED FRESNO SHANK WITH ROLLER



- Stainless Steel Nevada Shank with German Silver Floral Trim and integrated Stainless Steel Slobber Chain
- Salox® Spade Mouthpiece

Sizing Options

12 mm Mouthpiece
7 1/2" Shank

4 3/4"
120mm

5"
127mm

5 1/4"
133mm



PORTED NEVADA SHANK



- Stainless Steel Nevada Shank with German Silver Floral Trim and integrated Stainless Steel Slobber Chain
- Salox® Spade Mouthpiece with incorporated roller

Sizing Options

12 mm Mouthpiece
7 1/2" Shank

4 3/4"
120mm

5"
127mm

5 1/4"
133mm



PORTED NEVADA SHANK WITH ROLLER



- Stainless Steel Nevada Shank with German Silver Floral Trim and integrated Stainless Steel Slobber Chain
- Engraved Salox® Spade Mouthpiece

Sizing Options

12 mm Mouthpiece
7 1/2" Shank

4 3/4"
120mm

5"
127mm

5 1/4"
133mm



ENGRAVED PORTED NEVADA SHANK



- Stainless Steel Nevada Shank with German Silver Floral Trim and integrated Stainless Steel Slobber Chain
- Engraved Salox® Spade Mouthpiece with incorporated roller

Sizing Options

12 mm Mouthpiece
7 1/2" Shank

4 3/4"
120mm

5"
127mm

5 1/4"
133mm



ENGRAVED PORTED NEVADA SHANK WITH ROLLER



- Stainless Steel Santa Barbara Shank with German Silver Floral Trim and integrated Stainless Steel Slobber Bar
- Salox® Spade Mouthpiece

Sizing Options

12 mm Mouthpiece
7 1/2" Shank

4 3/4"
120mm

5"
127mm

5 1/4"
133mm



PORTED SANTA BARBARA SHANK



- Stainless Steel Santa Barbara Shank with German Silver Floral Trim and integrated Stainless Steel Slobber Bar
- Salox® Spade Mouthpiece with incorporated Roller

Sizing Options

12 mm Mouthpiece
7 1/2" Shank

4 3/4"
120mm

5"
127mm

5 1/4"
133mm



PORTED SANTA BARBARA SHANK WITH ROLLER



- Stainless Steel Santa Barbara Shank with German Silver Floral Trim and integrated Stainless Steel Slobber Bar
- Engraved Salox® Spade Mouthpiece

Sizing Options

12 mm Mouthpiece
7 1/2" Shank

4 3/4"
120mm

5"
127mm

5 1/4"
133mm



ENGRAVED PORTED SANTA BARBARA SHANK



- Stainless Steel Santa Barbara Shank with German Silver Floral Trim and integrated Stainless Steel Slobber Bar
- Engraved Salox® Spade Mouthpiece with incorporated Roller

Sizing Options

12 mm Mouthpiece
7 1/2" Shank

4 3/4"
120mm

5"
127mm

5 1/4"
133mm



ENGRAVED PORTED SANTA BARBARA SHANK WITH ROLLER



- Salox® Western *Tongue***KIND** Mouthpiece
- 5 ½" Stainless Steel Shank

Sizing Options

12 mm Mouthpiece
 5 ½" Shank

4 ¾"	5"	5 ¼"
120mm	127mm	133mm



WESTERN *TONGUE*KIND** SHANK**



- Salox® Western *TongueKIND* Mouthpiece
- 5 ½" Stainless Steel Shank with German Silver Floral Trim

Sizing Options

12 mm Mouthpiece	4 ¾"	5"	5 ¼"
5 ½" Shank	120mm	127mm	133mm



WESTERN *TONGUEKIND* FLORAL TRIM SHANK



- Salox® Western *TongueKIND* Mouthpiece
- 7 ½" Stainless Steel Wire Cheek

Sizing Options

12 mm Mouthpiece
7 ½" Shank

4 ¾"
120mm

5"
127mm

5 ¼"
133mm



WESTERN *TONGUEKIND* WIRE CHEEK



- Salox® Western *TongueKIND* Mouthpiece
- 7 ½" Stainless Steel Wire Cheek with German Silver Bar & Rope Trim

Sizing Options

12 mm Mouthpiece
7 ½" Shank

4 ¾"
120mm

5"
127mm

5 ¼"
133mm



WESTERN *TONGUEKIND* ROPE TRIM WIRE CHEEK



- Salox® Slimma (*main picture*) or Salox® Mors L'Hotte Mouthpiece (*inset*)
- 6" or 7 ½" Engraved Aluminium Grazing Shank with interchangeable Concho (Sold Separately)

Sizing Options

14 mm (*Slimma*) or 12 mm
(*Mors L'Hotte*) Mouthpiece
6" or 7 ½" Shank

4 ¾"
120mm

5"
127mm

5 ¼"
133mm



ENGRAVED SHANK GRAZING BIT with SLIMMA or MORS L'HOTTE MOUTHPIECE



- Stainless Steel Dee-Ring with German Silver Trim and Fixed Concho
- Salox® Tranz Angled Lozenge Mouthpiece

Sizing Options

14 mm Mouthpiece

4 ¾"
120mm

5"
127mm

5 ¼"
133mm



TRANZ ANGLED LOZENGE DEE-RING



- Stainless Steel Offset Dee-Ring with Brass Trim and Fixed Concho
- Salox® Tranz Angled Lozenge Mouthpiece

Sizing Options

14 mm Mouthpiece

4 ¾"
120mm

5"
127mm

5 ¼"
133mm



TRANZ ANGLED LOZENGE OFFSET DEE-RING BRASS TRIM



- Stainless Steel Offset Dee-Ring with German Silver Trim and Fixed Concho
- Salox® Tranz Angled Lozenge Mouthpiece

Sizing Options

14 mm Mouthpiece

4 3/4"

120mm

5"

127mm

5 1/4"

133mm



TRANZ ANGLED LOZENGE OFFSET DEE-RING GERMAN SILVER TRIM



- Stainless Steel Dee-Ring with German Silver Trim and Fixed Concho
- Salox® Demi-Anky Mouthpiece

Sizing Options

16 mm Mouthpiece

4 3/4"
120mm

5"
127mm

5 1/4"
133mm



DEMI-ANKY DEE-RING



- Stainless Steel Offset Dee-Ring with Brass Trim and Fixed Concho
- Salox® Demi-Anky Mouthpiece

Sizing Options

16 mm Mouthpiece

4 3/4"
120mm

5"
127mm

5 1/4"
133mm



DEMI-ANKY OFFSET DEE-RING BRASS TRIM



- Stainless Steel Dee-Ring with German Silver Trim and Fixed Concho
- Salox® Turtle Tactio Mouthpiece

Sizing Options

16 mm Mouthpiece

XS	S	M
108 - 118mm	118- 128mm	128 - 138mm



TURTLE TACTIO DEE-RING



- Stainless Steel Offset Dee-Ring with Brass Trim and Fixed Concho
- Salox® Turtle Tactio Mouthpiece

Sizing Options

16 mm Mouthpiece

XS	S	M
108 - 118mm	118- 128mm	128 - 138mm



TURTLE TACTIO OFFSET DEE-RING BRASS TRIM



- Stainless Steel Dee-Ring with German Silver Trim and Fixed Concho
- Salox® Turtle Top Mouthpiece

Sizing Options

16 mm Mouthpiece

XS	S	M
108 - 118mm	118- 128mm	128 - 138mm



TURTLE TOP DEE-RING



- Stainless Steel Offset Dee-Ring with Brass Trim and Fixed Concho
- Salox® Turtle Top Mouthpiece

Sizing Options

16 mm Mouthpiece

XS	S	M
108 - 118mm	118- 128mm	128 - 138mm



TURTLE TOP OFFSET DEE-RING BRASS TRIM



- 6 ½" Stainless Steel Shank Cheek
- Salox® Demi-Anky Mouthpiece

Sizing Options

16 mm Mouthpiece
6 ½" Shank

4 ¾"
120mm

5"
127mm

5 ¼"
133mm



DEMI-ANKY SHANK BIT



- Stainless Steel Western Dee-Ring with Brass Trim
- Salox® Verbindend Mouthpiece

Sizing Options

12 mm Mouthpiece

4 ¾"
120mm

5"
127mm

5 ¼"
133mm



VERBINDEND WESTERN DEE-RING



- Interchangeable Conchos for Grazing Bits
- 6 Options Available
- Supplied with Additional Allen Bolts

Sizing Options

One Size

CONCHOS

www.nsbits.com
0844 66 44 600



A NEUE SCHULE GROUP COMPANY



www.nsbitsusa.com
631-252-5574